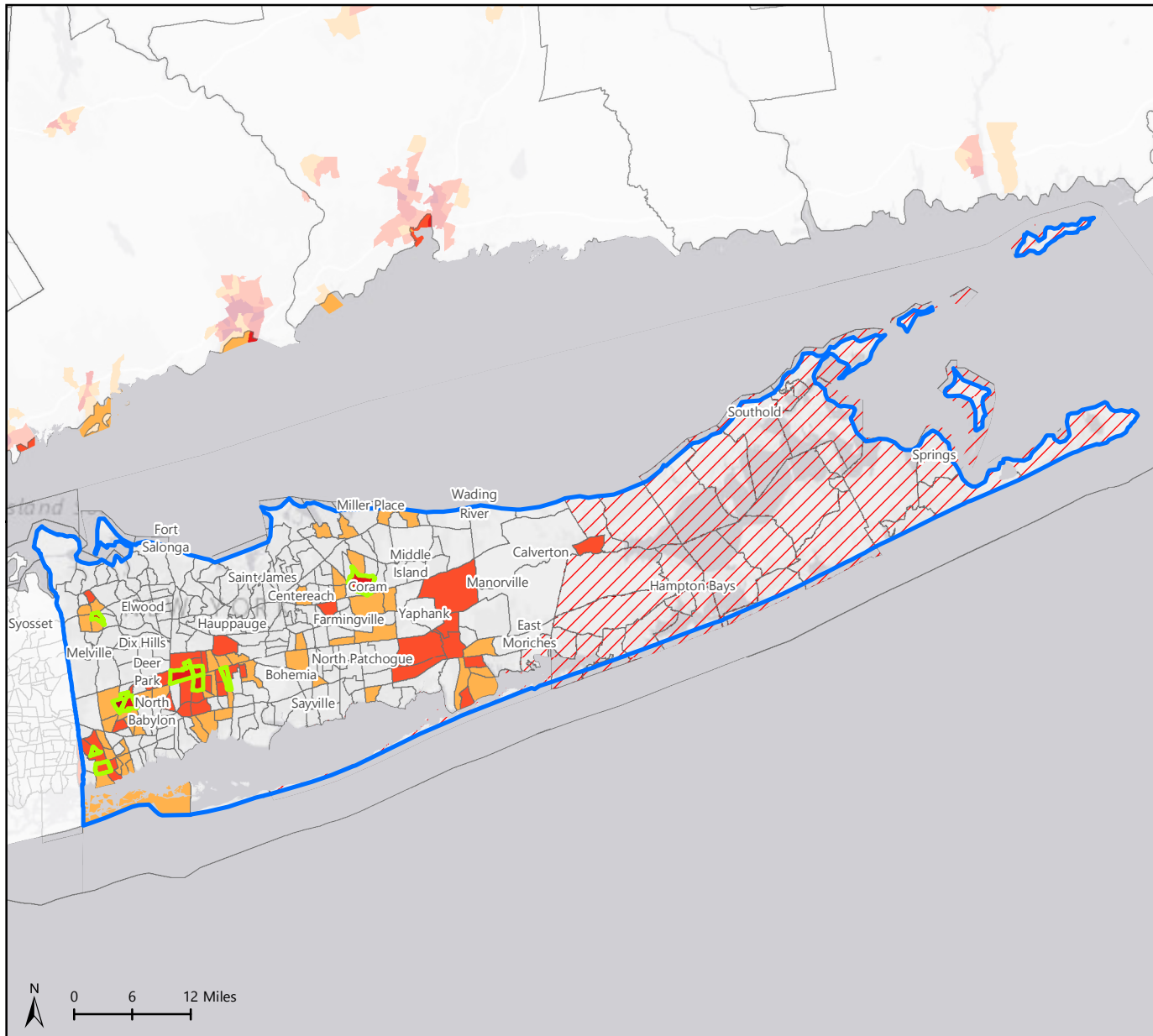


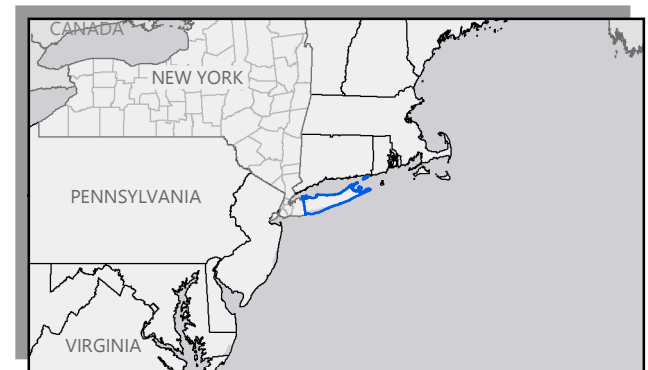
HARD-TO-COUNT CENSUS TRACTS IN SUFFOLK COUNTY, NEW YORK



In the 2010 decennial census, **75.6% of Suffolk County's households mailed back their questionnaire**, requiring more costly and difficult in-person follow up from the Census Bureau to count the remaining 24.4%.

Based on the latest census estimates, **approximately 33% of the county's current population (or 487,573 people) lives in hard-to-count neighborhoods**, shaded in **light orange to dark red** on the map. (These are census tracts where almost a quarter or more households did not mail in their census questionnaire in 2010.)

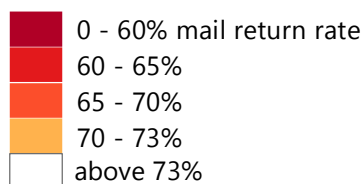
Without higher self-response, more households in these and other neighborhoods in Suffolk County are at risk of being missed in the 2020 census.



Hardest to Count (HTC)

Tracts in the Nation

Tracts with 2010 mail return rates of 73% or less (in the bottom 20 percent of return rates nationwide) are shaded on the map. Tracts with >73% return rate are not displayed.



Tracts counted using special Update/Enumerate method; they are hard-to-count but mail return rates not applicable

Tracts with lowest mail return rate in Suffolk County

Cartography by CUNY Graduate Center, Center for Urban Research, 2018.
Data: U.S. Census Bureau; ESRI Basemap.
Created: 11/28/2018

For more details and additional information, please visit: <https://www.CensusHardtoCountMaps2020.us>

HTC 2020